

Prospective multicenter study

7 high risk spinal surgeries

Ex. L/C decompression, ACDF, short lumbar fusion etc.

871 OPLL

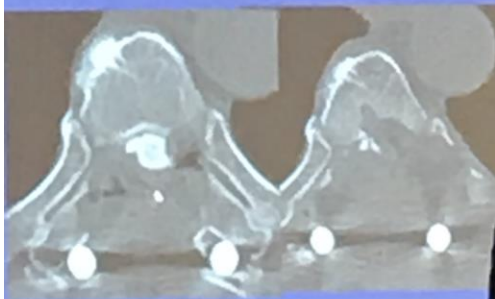
OPLL

249

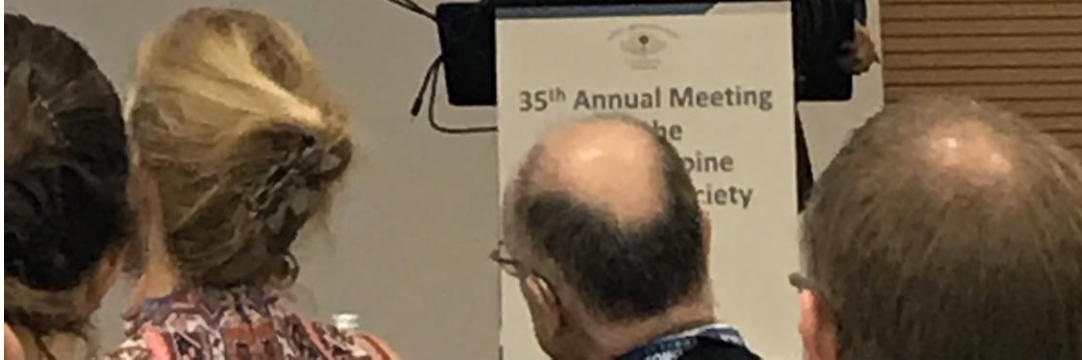
Thoracic -OPLL



35th Annual Meeting
of the
Cervical Spine
Research Society
Europe



35th Annual Meeting
of the
Spine
Society



35th ANNUAL MEETING
CERVICAL SPINE RESEARCH SOCIETY – EUROPE

22–24 MAY 2019
Rome



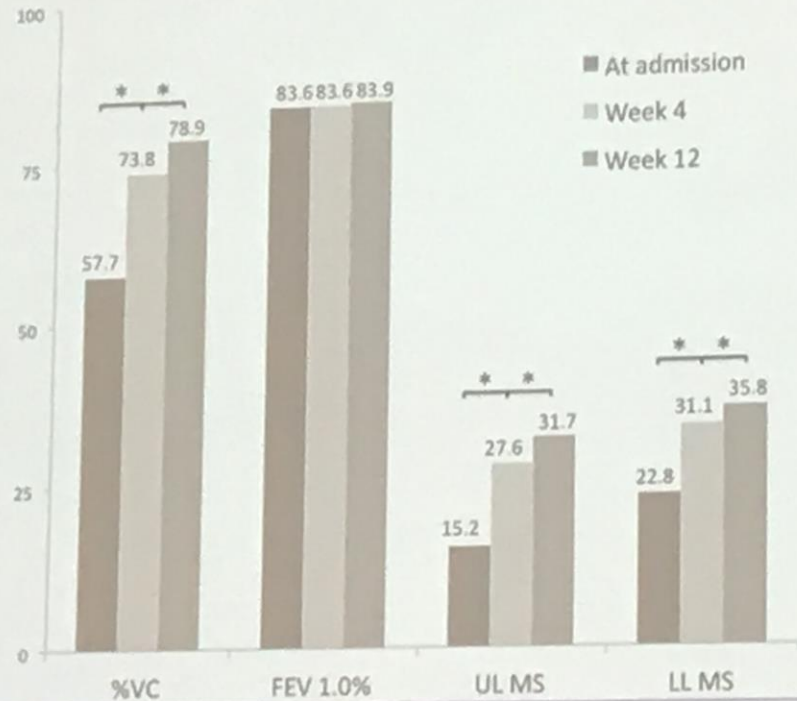
www.csrseurope-congress.com

C. Olerud

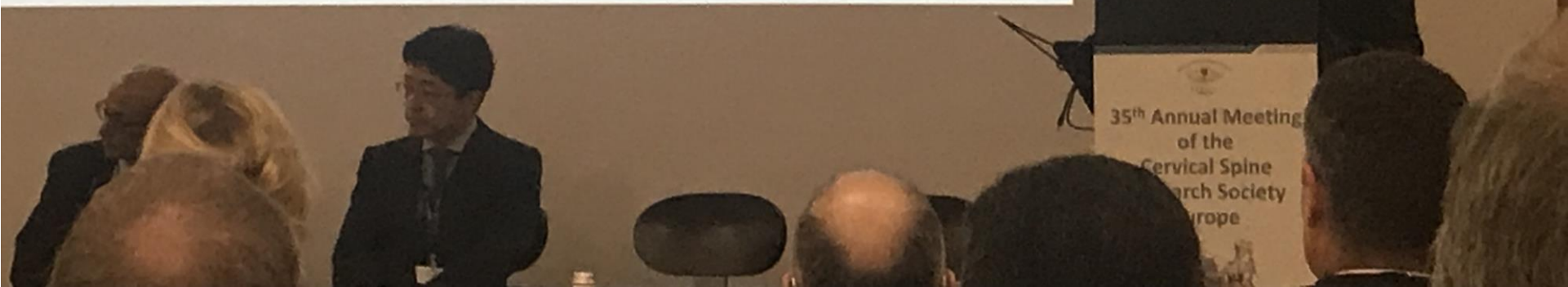
F. Tamburelli



es in %VC, FEV 1.0%, and upper- and lower-
MSs over time



MS of the upper and lower limbs and the %VC
significantly improved by weeks 4 and 12.



CERVICAL SPINE RESEARCH

22-24 MAY 2019
Rome



© 2019 CSRS Europe. All rights reserved. | www.csrseurope.com

www.csrseurope-congress.com



Distribution of muscle weakness in C5, C5-6 and C7 nerve root lesion

C5		C5-6		C7	
Muscle	Tendency (%)	Muscle	Tendency (%)	Muscle	Tendency (%)
Delt	100	Delt	100	EDC	50
SSP	100	SSP	100	ECU	50
ISP	100	ISP	100		
Biceps	100	Biceps	100		
		BrR	33		
		ECR	33		

35th Annual Meeting
of the
Cervical Spine
Research Society
Europe

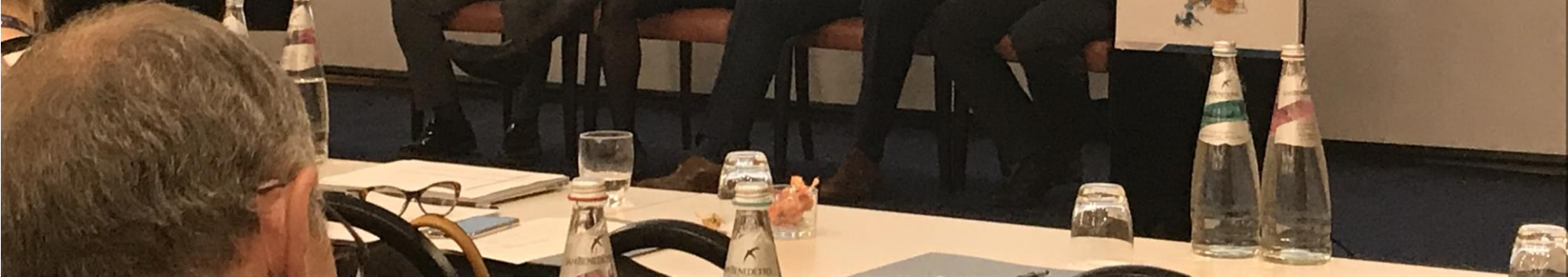




A. Combalia



35th Annual Meeting
of the
Cervical Spine
Research Society
Europe





Cervical Spine Research Society

Europe

founded 1983



csrs

csrs

CERVICAL

EUROPEAN

SEC

1983

22-24 MAY 2019

Rome



www.csrs-europe-congress.com



C. Olerud

ANNUAL MEETING

THE EUROPEAN SOCIETY OF SPINE RESEARCH SOCIETY - EUROPE



22-24 MAY 2019

Rome



www.essr-europe-congress.com



22-24 MAY 2019

Rome



www.eao-congress.com



Surgical methods

C-OPLL

- Laminoplasty/tomy



w/wo PF

- ACCF



T-OPLL

- Posterior decompression and de-kyphotic fusion (first choice)
- if necessary, remove OPLL anterior/ posterior (secondary)



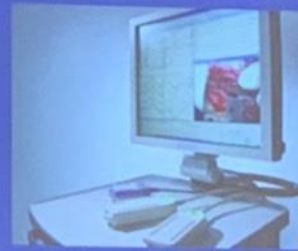
35th Annual Meeting of the Cervical Research Europe

C. Olerud

. Tamburelli

Purpose

- ✓ To analyze the neurological complication and details of IOMN alert
- ✓ To clarify how to prevent neural damage in OPLL surgeries.



Conclusion

- Patients with CLBP present the **worse** cervical sagittal alignment and higher prevalence of **cervical deformity** than age and gender matched volunteers
- CLBP impact on cervical lesion **negatively**.

